

# User Reference Guide to UTRADE Android Tablet App

## Table of Content

Currently UTRADE Android Tablet App is able to support SGX Market only. Trades for foreign markets are not reflected.

- System Requirements and Login.....1
- Navigation.....2
- Chart View
  - i. Price Quote.....3
  - ii. Chart.....5
  - iii. Info Boxes.....7
- Trade View
  - i. Price Quote.....10
  - ii. Order book/Portfolio.....11
  - iii. Order Ticket.....12
- Chart View – How to do Charting
  - i. Basic Navigation.....13
  - ii. Advance Feature.....13
- Portfolio.....19
- Account
  - i. Outstanding Position.....21
  - ii. Account Balance.....21
  - iii. User ID and Password.....22
  - iv. Preference.....22
  - v. Rewards.....23
  - vi. TR Details.....27
- Order Book.....28
- ChartGenie.....29
- StockScreener.....30
- Alert Page.....31
- Manage Watchlist.....32
- Contact Us.....33
- RWS T&C.....34
- Setting.....34

# User Reference Guide to UTRADE Android Tablet App


## System Requirements

- a) Device type: Android Tablet only, above 7 inch, 10 inch for best viewing
- b) Minimum OS: Android version 4.4 and above
- c) Memory: 1GB RAM or above.
- d) Internet connectivity: Yes, internet connection is required

## Login


The **User ID** and **Password** used is the same set used for accessing UTRADE Web. As such, please note that you will only be able to log into either UTRADE Android Tablet or UTRADE Web at any given moment, but not both at the same time.

If you have forgotten your User ID and/or Password, please contact our Client Services Officers for assistance.



New Online Client  
**FREE SGX Market Depth**  
when **UTRADE** with us\*

\*Terms and Conditions Apply



UOBKayHian

1.0

User ID

Password

LOGIN

[Security Advisory](#)

### News

18/03/2016 14:20  
BUZZ-Singapore's DBS Group may rise further - technicals  
18/03/2016 14:08  
EM ASIA FX-Asian currencies stay firm, set for weekly gains  
18/03/2016 12:09  
GLOBAL MARKETS-Asia stocks, oil jump as dollar sags after Fed  
18/03/2016 09:44  
EM ASIA FX-Won, ringgit, rupiah, peso, yuan push higher  
18/03/2016 08:02  
DIARY-Emerging Markets Economic Events to March 29

### Important Notices

Restricted Stocks for Online Trading  
Revised Exposure to Small Cap Stocks (SCS)  
Online Margin Trading for Hong Kong and US Markets  
2FA (OneKey) Maintenance on 28 Feb  
[more](#)

### Events

31 Mar 2016  
The Secret of IVolume Spread Analysis - Trading without indicators  
Time: 7.00pm - 10.00pm  
Branches: Jurong East Investor Centre  
[more](#)

16 Mar 2016  
Capturing Market Opportunities with SPDR ETFs  
Time: 6.45pm - 8.15pm  
Branches: SGX Auditorium  
[more](#)

[Terms & Conditions](#) | [Privacy Policy](#) | [Disclaimers](#) | [UOB Residents](#) Copyright ©2015, UOB Kay Hian Pte Ltd. All rights reserved. Company Registration Number 197008447W

UOBKayHian

1

# User Reference Guide to UTRADE Android Tablet App

## Navigation

After login, the default view is Chart View. User may find the navigation menu on the right and the pages available in the navigation menu are:

- a) Stock Search
- b) Chart View
- c) Trade View
- d) Portfolio
- e) Account
- f) Order Book
- g) ChartGenie
- h) StockScreener
- i) Alert Page
- j) Manage Watchlist
- k) Contact Us
- l) RWS T&C
- m) Settings
- n) Logout

SGX Market Only



## Chart View (SGX Market Only)

a) There are 3 components that can be found in the Charting View

i. Price Quote

Price Quote is located on the left and you may find the prices for Top Movers which include Top Volume, Top Gainer, Top Loser, Top% Gainer and Top % Loser.



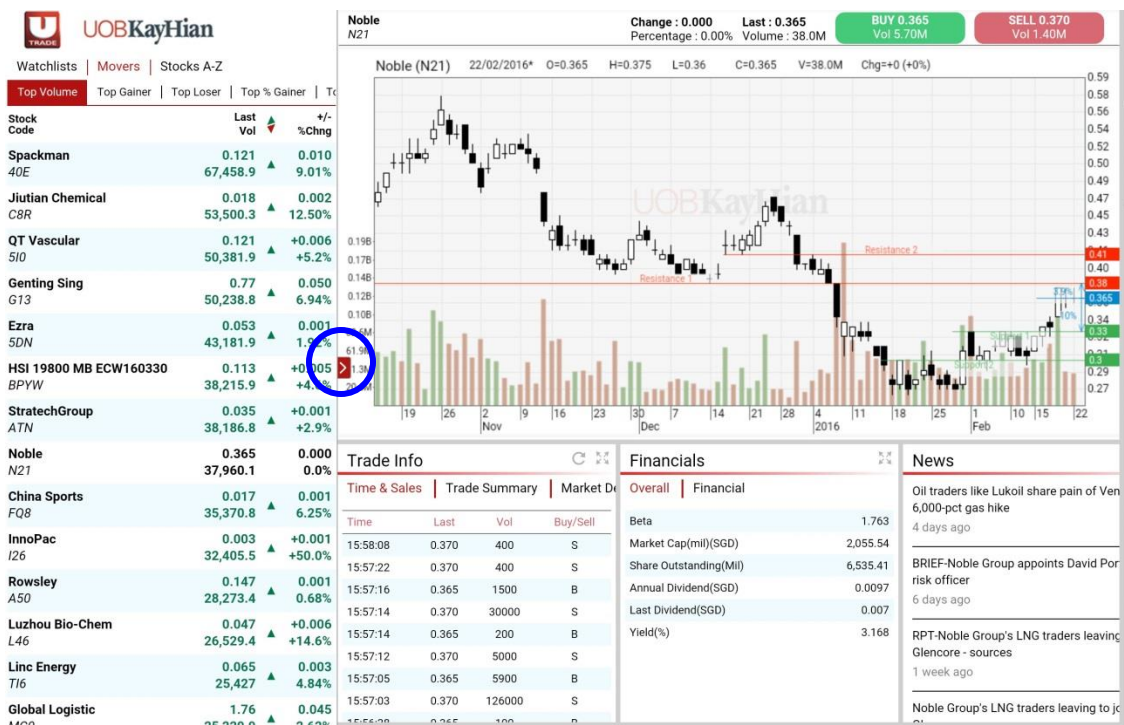
Watchlists   Movers   Stocks A-Z				
Top Volume	Top Gainer	Top Loser	Top % Gainer	Top % Loser
Stock Code	Last Vol	▲	+/- %Chng	
HSI 20000 MB ECW160226	0.048		-0.033	
BPGW	35,380.6	▼	-40.7%	
Global Logistic	1.63		-0.035	
MC0	34,585.4	▼	-2.10%	
Ezra	0.052		-0.001	
5DN	29,878.2	▼	-1.9%	
Annica	0.001		0.000	
5AL	24,750		0.0%	
Noble	0.305		0.000	
N21	24,141.7		0.0%	
HSI 19800 MB ECW160330	0.13		-0.034	
BPYW	23,817	▼	-20.7%	
Genting Sing	0.675		-0.015	
G13	19,412.7	▼	-2.2%	
SingTel	3.50		0.000	
Z74	18,071.8		0.0%	
HPH Trust USD	0.465		-0.005	
NS8U	14,732	▼	-1.06%	
HongkongLand USD	5.82		-0.350	
H78	13,864.3	▼	-5.7%	

Besides the Top Movers, you may find your watchlist and view any stock based on alphabet selections in this section

# User Reference Guide to UTRADE Android Tablet App

## Chart View (SGX Market Only)

There is a expanded view where more information will be displayed in the Price Quote table. Click on the button to expand it. To return back to the smaller view, click on the same button in the expanded view



Watchlists   Movers   Stocks A-Z									
Watchlist 1   Watchlist 2   Watchlist 3   Watchlist 4   Watchlist 5									
Stock Code	Last Vol	+/- %Chng	Buy Vol	Sell Vol	High Low	Close EP	Rmks Ind	Remarks Legend	
FTSE ST Financial Index	-	-	0.0	0.0	0.0	688.36	-	Buy	Sell
STI	2536.09	-43.140	0.0	0.0	2558.54	2579.23	-	Buy	Sell
\$STI	251,308	-1.7%	0	0	2528.44	-	-	Buy	Sell
Noble N21	0.305	0.000	0.305	0.31	0.31	0.305	-	Buy	Sell
Sakae 500	7.4	+2.6%	2.6	0.3	0.39	-	C, M	Buy	Sell
Singapore O&G 41X	0.705	-0.015	0.705	0.71	0.71	0.72	-	Buy	Sell
UOA EH5	-	-	0.45	0.485	0.0	0.465	-	Buy	Sell
UOB U11	17.55	0.160	17.54	17.55	17.55	17.39	-	Buy	Sell
XPRESS HOLDINGS LTD(I04)	-	-	0.0	0.0	0.0	0.014	-	Buy	Sell
A-Sonic Aero AWQ	-	-	0.205	0.215	0.0	0.215	-	Buy	Sell

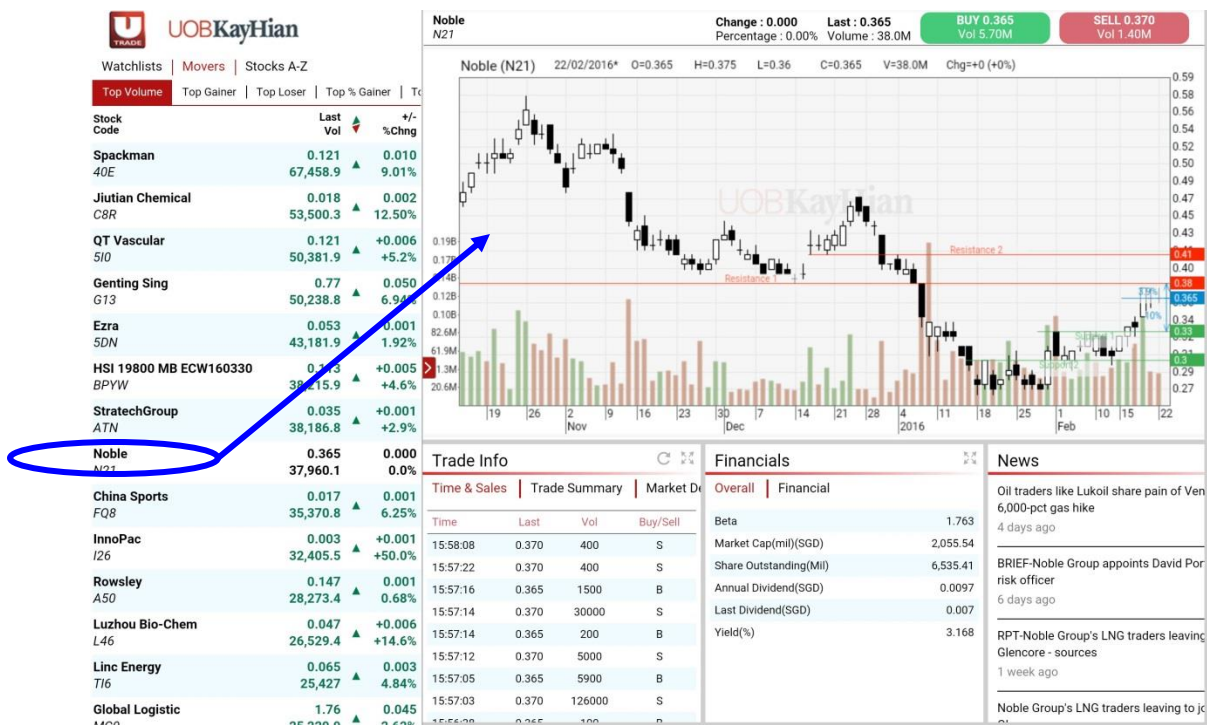


# User Reference Guide to UTRADE Android Tablet App

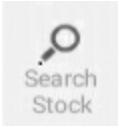
## Chart View (SGX Market Only)

### ii. Chart

Click on any stock from the Price Quote and it will open the chart directly.  
For more information on Charting, please refer to section



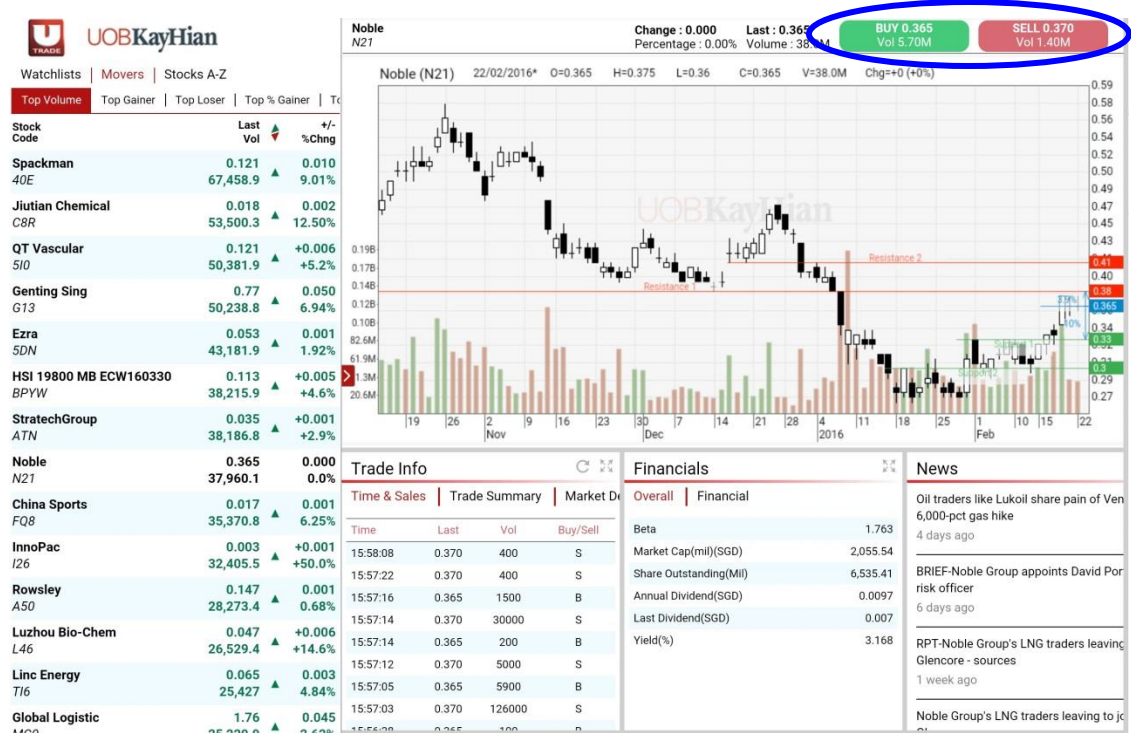
You can also use the “Search” button on the navigation menu to search for any stock that you wishes to view in the chart.



# User Reference Guide to UTRADE Android Tablet App

## Chart View (SGX Market Only)

To make an order, click on the Buy/Sell button accordingly and the order ticket will be popped up for user to enter the price, quantity and trading account password



Order Ticket

Account

(Cash Acct)

Exchange : SGX

BUY Limit(\$\$) : 999999828257.13

SELL Limit(\$\$) : 999999990232.00

Stock Name	Buy	BuyVol	Last	Chng	Vol	Sell	SellVol	Lot Size
Noble (N21)	0.37	125.5	0.37	+0.005	44,595.5	0.375	7,201.5	100

Action

☒ Buy ☐ Sell ☐ Short Sell

Price

Quantity

Payment

☒ Cash ☐ SRS

Settlement Currency

SGD (SGD)

Password

SUBMIT

CLEAR

NOTES

1. If you have more than one account, please select the account before placing your order.

2. Order will be rejected if the price exceeds the number of bids allowed by the exchange. [More](#).

3. Maximum order quantity is limited at 500,000 per order. Please key in multiple orders for orders above that quantity.

# User Reference Guide to UTRADE Android Tablet App

## Chart View (SGX Market Only)

### iii. Info Boxes

The info boxes will load information on the stock when the stock is selected from the Price Quote. The following information will be displayed.

Trade Info				Financials		News
Time & Sales   Trade Summary   Market D				Overall   Financial		BRIEF-United Overseas Bank says UOE Philippines will cease its banking busin the Philippines 1 month ago
Time	Last	Vol	Buy/Sell	Beta	1.168	
16:40:24	17.570	400	S	Market Cap(mil)(SGD)	28,536.83	
16:40:16	17.560	200	B	Share Outstanding(Mil)	1,607.31	
16:40:03	17.560	100	B	Annual Dividend(SGD)	0.7	ASEAN banks' bad debt woes set to pu valuations even lower 2 months ago
16:40:02	17.560	200	S	Last Dividend(SGD)	0.35	
16:40:02	17.560	300	S	Yield(%)	4.824	BRIEF-United Overseas Bank says esta US\$8 billion global covered bond progr 2 months ago
16:40:02	17.560	100	S			
16:40:02	17.560	300	S			
16:39:37	17.560	500	S			

- Trade Info
  - Time & Sales
  - Trade Summary
  - Market Depth

Trade Info			
Time & Sales   Trade Summary   Market D			
Time	Last	Vol	Buy/Sell
16:40:24	17.570	400	S
16:40:16	17.560	200	B
16:40:03	17.560	100	B
16:40:02	17.560	200	S
16:40:02	17.560	300	S
16:40:02	17.560	100	S
16:40:02	17.560	300	S
16:39:37	17.560	500	S

Click on this to manually update the information

Click on this button to expand or minimize the info box.



## Chart View (SGX Market Only)

- **Financials**
  - o Overall
  - o Financials

Financials	
Overall	Financial
Beta	1.168
Market Cap(mil)(SGD)	28,536.83
Share Outstanding(Mil)	1,607.31
Annual Dividend(SGD)	0.7
Last Dividend(SGD)	0.35
Yield(%)	4.824

- **News**

News
BRIEF-United Overseas Bank says UOB Philippines will cease its banking business in the Philippines 1 month ago
ASEAN banks' bad debt woes set to push valuations even lower 2 months ago
BRIEF-United Overseas Bank says established a US\$8 billion global covered bond programme 2 months ago

Chart View (SGX Market Only)

- **Company Info**

Company Info

United Overseas Bank Limited is engaged in the business of banking. The Company provides a range of financial services. The Company's services include personal financial services, private banking, business banking, commercial and corporate banking, transaction banking, investment banking, corporate finance, capital market activities, treasury services, brokerage and clearing services, asset management, venture capital management and insurance. Its operating segments include Group Retail, Group Wholesale Banking, Global Markets and Investment Management (GMIM), and Others. The Group Retail segment covers consumer

- **Consensus**

- o Target Price
- o Call Distribution

Consensus		
Target Price   Call Distribution		
	Current	1mth ago
High	27.5	27.5
Low	17.5	17.5
Mean	21.97	22.36
Median	21.55	21.85
Std Dev	3.1	2.99
Num of Est	0.23	0.24

# User Reference Guide to UTRADE Android Tablet App

## Trade View (SGX Market Only)

U

UOBKayHian

Watchlists

Movers

Stocks A-Z

Top Volume

Top Gainer

Top Loser

Top % Gainer

Top % Loser

Remarks Legend

Stock Code	Last Vol	+/- %Chng	Buy Vol	Sell Vol	High Low	Close EP	Rmks Ind
DISA LIMITED 532	0.031 173,212.5	0.000 0.0%	0.03 67,179.5	0.031 40,563.7	0.032 0.029	0.031 0.000	- C
MDR A27	0.007 115,602.6	0.000 0.0%	0.006 81,530	0.007 30,445.3	0.007 0.006	0.007 0.000	- C
HSI 23800 MB EPW170629 CGKW	0.062 85,870	0.000 0.0%	0.061 1,080	0.062 1,100	0.065 0.059	0.062 -	- @
Noble CGP	0.695 85,805.6	-0.180 -7.4%	0.69 261.5	0.695 33.9	0.81 0.61	0.875 0.000	- @
HSI 25400 MB ECW170529 CFRW	0.05 64,468	-0.004 -7.4%	0.049 505	0.05 500	0.053 0.046	0.054 -	- @
Addvalue Tech A31	0.063 49,238.8	-0.002 -3.08%	0.063 2,402.4	0.064 6,485.2	0.065 0.062	0.065 0.000	- C
HSI 25200 MB ECW170629 CGIW	0.10 38,119	-0.004 -3.8%	0.099 500	0.1 1,000	0.103 0.096	0.104 -	- @
ThaiBev V20	0.895 36,805.4	-0.020 -0.0%	0.89 1,600.5	0.895 0.075	0.895 0.075	0.915 0.000	CD M

Order Book

Portfolio

Information is updated as of 2017-05-12 11:09:21

SGX

All

Today's Orders

Submit

Account	Mkt	Stock Name	Action	Original Qty	Qty Price	Order Type	Status	Qty Done	O/S Qty	Details	Action
---------	-----	------------	--------	--------------	-----------	------------	--------	----------	---------	---------	--------

Notes:

1. Filled and partially filled orders will appear in the "Filled" section of the order book.

2. Please take note of the "Qty Done" column for partially filled orders.

3. Amounts shown are indicative. Please refer to your contract note for the exact amount.

Place Order

Account: Exchange:

Stock :

Action : Buy Sell Short Sell

Price :

Quantity :

Payment :

Settlement :

Currency :

Password :

BUY Limit(\$\$) :  
SELL Limit(\$\$) :

NOTES

SUBMIT CLEAR

Trade Info

Time & Sales Trade Summary

Time	Last	Vol	Buy/Sell
------	------	-----	----------

Stock not found.

Search Stock

Chart View

Trade View

Portfolio

Account

Order Book

Chart Genie

Stock Screener

Alert Page

Manage Watchlist

Contact Us

RWS T&C

a. There are 4 components that can be found in the Trade View

i. Price Quote

Price Quote is located on the left and you may find the prices for Top Movers which include Top Volume, Top Gainer, Top Loser, Top% Gainer and Top % Loser.

Top Volume	Top Gainer	Top Loser	Top % Gainer	Top % Loser	Remarks Legend						
Stock Code	Last Vol	+/- %Chng	Buy Vol	Sell Vol	High Low	Close EP	Rmks Ind				
HSI 20000 MB ECW160226 BPGW	0.048 35,380.6	-0.033 -40.7%	0.047 35	0.052 145	0.05 0.037	0.081 -	@	Buy	Sell		
Global Logistic MCO	1.625 35,025.7	-0.040 -2.4%	1.625 738.1	1.63 650.3	1.64 1.6	1.665 0.000	C,M	Buy	Sell		
Ezra 5DN	0.052 30,005.7	-0.001 -1.9%	0.052 3,794.3	0.053 3,900.4	0.053 0.051	0.053 0.000	C,M	Buy	Sell		
Annica 5AL	0.001 24,750	0.000 0.0%	0.001 30	0.002 81,650.3	0.001 0.001	0.001 -	C	Buy	Sell		
SECURA GROUP W190125 43CW	0.016 24,585.1	+0.003 +23.1%	0.016 1,380	0.017 1,069.2	0.017 0.013	0.013 -	-	Buy	Sell		
Noble N21	0.305 24,458.9	0.000 0.0%	0.305 2,953.6	0.31 4,319.7	0.31 0.29	0.305 0.000	M	Buy	Sell		

Besides the Top Movers, you may find your watchlist and view any stock based on alphabet selections in this section

# User Reference Guide to UTRADE Android Tablet App

## Trade View (SGX Market Only)

### ii. Order book/Portfolio

Order Book and Portfolio is below the Price Quote table. To view more information, the user may click on the expand button to go to the normal Order Book and Portfolio page



## Order Book Portfolio

Information is updated as of 2017-05-12 11:23:07

SGX

All

Today's Orders

Submit

Account	Mkt	Stock Name	Action	Original Qty	Qty	Price	Order Type	Status	Qty Done	O/S Qty	Details	Action
	SGX	UOB	Buy	100	100	23.6	LO	PO	0	100	<a href="#">more</a>	<a href="#">Withdraw</a>   <a href="#">Amend</a>
	SGX	SingTel	Sell	300	300	3.77	LO	PO	0	300	<a href="#">more</a>	<a href="#">Withdraw</a>   <a href="#">Amend</a>
	SGX	ThaiBev	Buy	300	300	0.85	LO	PO	0	300	<a href="#">more</a>	<a href="#">Withdraw</a>   <a href="#">Amend</a>

## Order Book



Information is updated as of 2017-05-12 11:19:07

SGX

All

Today's Orders

Submit

Account	Mkt	Stock Name	Action	Original Qty	Qty	Price	Order Type	Status	Qty Done	O/S Qty	Details	Action
	SGX	UOB	Buy	100	100	23.6	LO	PO	0	100	<a href="#">more</a>	<a href="#">Withdraw</a>   <a href="#">Amend</a>
	SGX	SingTel	Sell	300	300	3.77	LO	PO	0	300	<a href="#">more</a>	<a href="#">Withdraw</a>   <a href="#">Amend</a>
	SGX	ThaiBev	Buy	300	300	0.85	LO	PO	0	300	<a href="#">more</a>	<a href="#">Withdraw</a>   <a href="#">Amend</a>

Notes:

- 1. Filled and partially filled orders will appear in the "Filled" section of the order book.
- 2. Please take note of the "Qty Done" column for partially filled orders.
- 3. Amounts shown are indicative. Please refer to your contract note for the exact amount.

# User Reference Guide to UTRADE Android Tablet App

## Trade View (SGX Market Only)

### iii. Order Ticket

Click on the counter in the Price Quote and the stock details will be loaded in the order ticket. Enter the price, quantity, settlement currency and trading account password to place the order.

Place Order

Account :

Exchange :

(Cash Accot

SGX

Stock :

SECURA GROUP W190125(43CW)

Action :

☒ Buy

☐ Sell

☐ Short Sell

Price :

Quantity :

Payment :

-

Settlement Currency :

Password :

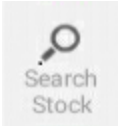
BUY Limit(S\$) :

9210.00

SUBMIT

CLEAR

You can also use the “Search” button on the navigation menu to search for any stock that you wishes to place an order.





## Chart View – How to do Charting

### i. Basic Navigation

To navigate the chart left/right, use your finger to drag left/right.

To zoom in/out, pinch the chart area with 2 fingers

### ii. Advance Feature

To activate the advanced features, tab on the chart and the features will be shown in the chart



### Period

Period will allow the user to choose Tick, 1 Min, 5 Min, 10 Min, 15 Min, 30 Min, Hourly, Daily+, Daily, Weekly+, Weekly, Monthly+ and Monthly Chart.

5 Min chart means each candle will represent 5 Minutes data



Chart View – How to do Charting

Type

There are 3 types of chart: Candlestick Chart, Bar Chart and Line Chart



## Chart View – How to do Charting

### Drawing

You are able to use the drawing tools to add drawing or remarks on the chart. Click on the 'Drawing' button.



After the drawing is done, click on the hand icon to stop the drawing feature and go back to the navigation part.



### Save

Click on the 'Save' button to save the drawing and the indicator selection. The chart opened will be based on the previously saved template.



Save

## Chart View – How to do Charting

### Indicator

Click on the 'Indicator' button to select the various indicator. Click on the button again to disable the indicator.



### Setting

To change the indicator's parameter setting, click on the 'Setting' button and click on the 'Edit' button from the list as displayed below .

ADX	Edit
Bollinger Band	Edit
CCI	Edit
CMF	Edit
Ichimoku	Edit
MA 1	Edit
MA 2	Edit
MA 3	Edit
MACD	Edit
MA Envelope	Edit

# User Reference Guide to UTRADE Android Tablet App

## Chart View – How to do Charting

### View

Click on 'View' to enable multiple charts view. You may change the chart from 1x1 to 1x2, 2x1 or 2x2.





# User Reference Guide to UTRADE Android Tablet App

## Chart View – How to do Charting

### Vertical

By clicking the 'Vertical' button, the chart will be extended and the trade info below the chart will be hidden. To change it back, click on the same button .



### Expand

Click on the 'Expand' button for full screen mode. To change it back, click on the same button.



# User Reference Guide to UTRADE Android Tablet App

## Portfolio (SGX Market Only)

You will find the Unrealised P/L and Realised P/L in the portfolio. Before accessing to the pages, you will need to agreed to the Terms and Conditions.

Portfolio

Unrealised P/L | Realised P/L

Terms of Use

The Portfolio is a virtual and thus indicative tool reflecting trades performed with UOB Kay Hian Pte Ltd, and will not be updated for trades performed with other brokers or for any corporate actions taken on these shares. Information contained within these pages are also subject to manual updates made by clients. Clients should always confirm their actual holdings with CDP or their CPF Investment Agent Banks.

UOB Kay Hian Pte Ltd cannot be held responsible or liable for any losses or damages resulting from the use of or reliance on information contained within these pages.

☐ Yes, I agree to the Terms of Use.

Submit

To find out more details on the trade, click on the icon on the right as illustrated below.

Unrealised P/L   Realised P/L						
Account	Stock Name	Traded Ccy	Avg Cost	Qty	Last	Profit/Loss
SGX CASH						
	Noble	SGD	0.93189	30000	0.405	-15,806.72
	Pacific Radiance	SGD	0.68229	15000	0.395	-4,309.37
	Total	SGD				-20,116.09
	Grand Total	SGD				-20,116.09
SGX SRS						
	HTL Intl	SGD	0.24074	796900	0.685	354,027.04
	Total	SGD				354,027.04
	Grand Total	SGD				354,027.04
	Overall Total	SGD				333,910.95

Details										
Date	Contract No.	Account	Mkt	Stock Name	Traded Ccy	Price	Action	Qty	Net Amt	Mode
11/03/2015			SGX	Noble	SGD	0.930	Buy	30,000	27,956.72	CASH
OK										

# User Reference Guide to UTRADE Android Tablet App

## Account

Information related to the trading account can be found in “Account”. The following are available:

- i. Outstanding Position
- ii. Account Balance
- iii. User ID and Password
- iv. Preference
- v. Rewards
- vi. TR Details

Account								
Outstanding Position   Account Balance   User ID and Password   Preferences   Rewards   TR De								
Account	Contract No	Date	Action	Due Date	Stock Name	Qty	Price	Net Amt
SGX CASH								
		02/02/2015	Buy	*05/02/2015	DBS	25,000	19.71000	494,279.01
		03/02/2015	Buy	*06/02/2015	United Engineers	2,000	3.13000	6,289.42
		21/10/2015	Buy	*26/10/2015	AVJennings A\$	9,600	0.55000	5,303.66
		11/11/2015	Buy	*16/11/2015	Shangri-La HKD	62	1.80000	158.74
		04/12/2015	Buy	*04/12/2015	HongkongLand USD	1,000	7.62000	7,644.66
Position Settled in AUD							AUD	-5,303.66
Position Settled in HKD							HKD	-158.74
Position Settled in SGD							SGD	-500,568.43
Position Settled in USD							USD	-7,644.66
NOTE								
1. Data is displayed for up to the settlement period.								
2. The exchange rate quoted is indicative. Please refer to your contract note for the exact amount.								
3. Shares not settled after the due date will be force-sold.								
4. Please contact Client Services for assistance at +65-6536-9338 from Monday to Friday, 8.30am - 6.00pm.								

# User Reference Guide to UTRADE Android Tablet App

## Account


### i. Outstanding Position

All the outstanding positions will be displayed in this page with different traded currency

Account								
Outstanding Position   Account Balance   User ID and Password   Preferences   Rewards   TR De								
Account	Contract No	Date	Action	Due Date	Stock Name	Qty	Price	Net Amt
SGX CASH								
		02/02/2015	Buy	*05/02/2015	DBS	25,000	19.71000	494,279.01
		03/02/2015	Buy	*06/02/2015	United Engineers	2,000	3.13000	6,289.42
		21/10/2015	Buy	*26/10/2015	AVJennings A\$	9,600	0.55000	5,303.66
		11/11/2015	Buy	*16/11/2015	Shangri-La HKD	62	1.80000	158.74
		04/12/2015	Buy	*04/12/2015	HongkongLand USD	1,000	7.62000	7,644.66
Position Settled in AUD								-5,303.66
Position Settled in HKD								-158.74
Position Settled in SGD								-500,568.43
Position Settled in USD								-7,644.66

### ii. Account Balance

Your account balance in different currencies are listed here.  
Click on the drop-down box to view your other accounts.

Outstanding Position   Account Balance   User ID and Password   Preferences   Rewards   TR De	
Account:	(Cash Account) 
Account Balance (AUD)	\$3,000.00
Account Balance (CAD)	\$4,228.97
Account Balance (CNY)	\$8,888.00
Account Balance (EUR)	\$8.39
Account Balance (GBP)	\$8,888.00
Account Balance (HKD)	\$3,000.00
Account Balance (JPY)	\$45,425.00
Account Balance (MYR)	\$3,000.00
Account Balance (NZD)	\$4,228.97
Account Balance (PHP)	\$3,000.00
Account Balance (RP)	\$3,000.00
Account Balance (SGD)	\$3,000.00
Account Balance (THB)	\$3,000.00
Account Balance (USD)	\$3,000.00

# User Reference Guide to UTRADE Android Tablet App

## Account

### iii. User ID and password

To change your User ID and Password, fill up the required fields and click on 'Save' to make the changes

anding Position | Account Balance | **User ID and Password** | Preferences | Rewards | TR Details

**Change User ID**

1. Enter New User ID

2. Re-Enter New User ID

3. Enter Password

Save

NOTE

1. The user ID must be alphanumeric and between 5 and 25 characters.

**Change Password**

1. Enter Current Password

2. Enter new Password

3. Re-Enter new Password

Save

### iv. Preference

Activate email alert for ChartGenie here. Enter your email and click on 'Save'. If you would like to amend the email address that was entered previously, it can also be done here.

anding Position | Account Balance | User ID and Password | **Preferences** | Rewards | TR Details

**ChartGenie**  
Allows you to receive alerts via email

Email  
Enter your Email address

abc@abc.com.my

☒ Activate ☐ Deactivate

Save




## Account

### v. Rewards


Display the rewards that are available for redemption. You will be able to view details of your Reward Points and the redemption that were made.

anding Position | Account Balance | User ID and Password | Preferences | Rewards | TR Details


ALL PROMOTION TRADE REBATES TRADE REWARDS LIFESTYLE REWARDS EDUCATION REWARDS




S\$25 Trade Rebate  
900 Points




SG Market Depth Streaming: 20 Levels & Customizable Pages (Monthly)  
500 Points




SMS Stock Alerts (Monthly - Max. 5 Per Day)  
200 Points




HK Real Time (100 Snapshots)  
125 Points




Analyst Day  
test1  
1 Points



SG Market Depth Snapshots (25)  
125 Points



HK Real Time Streaming: Broker Queue + Market Depth 10 Levels (Monthly)  
1500 Points



PROMOTION - US Real Time Streaming (Monthly) Usual 300 points  
200 Points

How to Redeem | Rewards FAQ | Term & Conditions

WELCOME CHARTNEXUS  
Your rewards points as of 3-Feb-2016

Points Available

Points Expiring 31-Dec-2016

3,000

2,000

YOUR SELECTION:  
Your cart is empty.

# User Reference Guide to UTRADE Android Tablet App


## Account

### v. Rewards


Click on the name of the item that you would like to redeem and a pop up will appear. Complete the form and click 'Add to Cart'.

anding Position | Account Balance | User ID and Password | Preferences | **Rewards** | TR Details


ALL PROMOTION TRADE REBATES TRADE REWARDS LIFESTYLE REWARDS EDUCATION REWARDS



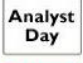
SG Market Depth Streaming: 20 Levels & Customizable Pages (Monthly)  
500 Points




HK Real Time (100 Snapshots)  
125 Points




PROMOTION - US Real Time Streaming (Monthly) Usual 300 points  
200 Points



Analyst Day  
test1  
1 Points



SG Market Depth Snapshots (25)  
125 Points



HK Real Time Streaming: Broker Queue + Market Depth 10 Levels (Monthly)  
1500 Points

How to Redeem | Rewards FAQ | Term & Conditions


WELCOME CHARTNEXUS  
Your rewards points as of 3-Feb-2016

Points Available3,000

Points Expiring 31-Dec-20162,000

YOUR SELECTION:  
Your cart is empty.

Reward



SG Market Depth Streaming: 20 Levels & Customizable Pages (Monthly)  
500 Points

Description :

1. Lists all buy and sell orders in the market for a particular security

2. View Market Depth (Up to 20 Levels) in streaming mode

3. With customizable pages

Terms and Conditions:

1. The service will only be available for redemption up to 6 months ahead, excluding the current month. Example: If the current month is Dec 2013, you may redeem from Dec 2013 + 6 months ahead (i.e. up to Jun 2014).

2. Please allow 2 working days for the implementation of applicable services on your account.

3. A month service period will be deemed as from the date of service activation to the end of that month. i.e. Service

Reward

4. Rewards points deducted for the respective services will be on monthly, quarterly or annual basis as indicated above. If your subscription is activated in the middle of the Month, you will still be deducted rewards points for the entire month/ quarter/ year. There will be no pro-rating of the rewards points deducted. Example: If your subscription starts on 22 April, rewards points will be deducted for the entire month of April.

5. There will be no refund of rewards points unless your redemption is rejected.

6. Terms and conditions governing UTRADE Rewards Programme apply.

Quantity1Start MonthFeb-2016

Add to Cart

OK

# User Reference Guide to UTRADE Android Tablet App

## Account

### v. Rewards

The cart stores the items that you have selected but the redemption is not completed. This enables you to have a quick overview of all the items selected and gives you the option to remove any items from the cart or make any changes before confirming your redemption.

To continue redeeming more awards, repeat the steps. Otherwise, click on 'Check Out' to confirm redemption.

Outstanding Position | Account Balance | User ID and Password | Preferences | Rewards | TR Details

ALL | PROMOTION | TRADE REBATES | TRADE REWARDS | LIFESTYLE REWARDS | EDUCATION REWARDS

Points Available4,551

Points Expiring 31-Dec-20160

YOUR SELECTION:

SG Market Depth Streaming: 20 Levels & Customizable Pages (Monthly)

Selected Qty : 1

Start Month : 26-03-2016

Points Used : 500

[\[Remove\]](#)

Checkout

Empty Cart

Tick the box for the Terms and Conditions, click on “Confirm” to complete the redemption

Outstanding Position | Account Balance | User ID and Password | Preferences | Rewards | TR Details

ALL | PROMOTION | TRADE REBATES | TRADE REWARDS | LIFESTYLE REWARDS | EDUCATION REWARDS

No.	Rewards	Points Required	Quantity	Start Month	Subtotal	
1	SG Market Depth Streaming: 20 Levels & Customizable Pages (Monthly)	500	1	26-03-2016	500	<a href="#">[Remove]</a>

Total Points Redeemed: 500

☒ I have read and accept the [Terms and Conditions.](#)

Confirm

Empty Cart

Back

# User Reference Guide to UTRADE Android Tablet App

## Account

### v. Rewards

You will be able to view details of your Reward Points details in My Points

Outstanding Position | Account Balance | User ID and Password | Preferences | Rewards | TR Details

ALL PROMOTION TRADE REBATES TRADE REWARDS LIFESTYLE REWARDS EDUCATION REWARDS

ALL

PROMOTION

TRADE REBATES

TRADE REWARDS

LIFESTYLE REWARDS

EDUCATION REWARDS

My Points

Redemption History

Points Earned	Points Redeemed	Balance	Points Expiring 31-Dec-2016
116,368	112,317	4,051	0

Show Details

Bonus Points Received	Bonus Points Redeemed	Balance	Bonus Points Expiring 31-Dec-2016
1,745	1,745	0	0

How to Redeem

Rewards FAQ

Term & Conditions

You will be able to view your past redemption in Redemption History

Outstanding Position | Account Balance | User ID and Password | Preferences | Rewards | TR Details

ALL PROMOTION TRADE REBATES TRADE REWARDS LIFESTYLE REWARDS EDUCATION REWARDS

							My Points
							Redemption History
<input type="radio"/> Current Month <input checked="" type="radio"/> Last 3 Months <input type="radio"/> Last 12 Months <input type="button" value="Go"/>							
No.	Redemption Date/Time	Rewards	Quantity	Start Month	Points Used	Status	
1	26-Feb-2016 08:56	SG Market Depth Streaming: 20 Levels & Customizable Pages (Monthly)	1 mth(s)	Mar-2016	500	PENDING	
2	18-Jan-2016 16:24	S\$25 Trade Rebate	3 pc(s)	N.A	2,700	APPROVED	
3	18-Jan-2016 15:56	SMS Stock Alerts (Monthly - Max. 5 Per Day)	1 mth(s)	Feb-2016	200	APPROVED	
4	18-Jan-2016 15:54	SMS Stock Alerts (Monthly - Max. 5 Per Day)	1 mth(s)	Feb-2016	200	REJECTED	
5	08-Jan-2016 17:40	S\$25 Trade Rebate	2 pc(s)	N.A	1,800	APPROVED	

## Account

### vi. TR Details

Details of your TR are found here.

standing Position | Account Balance | User ID and Password | Preferences | Rewards | TR Details

Account : 3

Name	Code	Contact No.
DAVID CHAN	346	--



# User Reference Guide to UTRADE Android Tablet App

## Order book (SGX Market Only)

Monitor your order status

- i. View order statuses and Amend/Withdraw orders if desired
- ii. Click on 'More' to view more order details



Account	Mkt	Stock Name	Action	Original Qty	Qty	Price	Order Type	Status	Qty Done	O/S Qty	Details	Action
	SGX	Ezra	Buy	1000	1,000	0.051	LO	R	0	1000	<a href="#">more</a>	
	SGX	800 Super	Buy	1000	1,000	0.44	LO	Q	0	1000	<a href="#">more</a>	<a href="#">Withdraw</a>   <a href="#">Amend</a>
	SGX	HongkongLand USD	Buy	46	46	0.6	LO	R	0	46	<a href="#">more</a>	
	SGX	Noble	Buy	100	100	0.305	LO	F	100	0	<a href="#">more</a>	
	SGX	Noble	Sell	1000	1,000	0.3	LO	F	1,000	0	<a href="#">more</a>	
	SGX	Noble	Sell	1000	600	0.31	LO	Q	0	600	<a href="#">more</a>	<a href="#">Withdraw</a>   <a href="#">Amend</a>
	SGX	Ezra	Buy	1000	1,000	0.053	LO	R	0	1000	<a href="#">more</a>	
	SGX	Ezra	Buy	1000	1,000	0.053	LO	R	0	1000	<a href="#">more</a>	
	SGX	Golden Agri-Res	Buy	1000	1,000	0.35	LO	Q	0	1000	<a href="#">more</a>	<a href="#">Withdraw</a>   <a href="#">Amend</a>
	SGX	Noble	Buy	100	100	0.395	LO	PO	0	100	<a href="#">more</a>	<a href="#">Withdraw</a>   <a href="#">Amend</a>

There are 3 drop-down boxes on top that allow you to filter the list by choosing the markets, type of order and time of order made

SGX ▼

All ▼

Today's Orders ▼

Submit

# User Reference Guide to UTRADE Android Tablet App

## ChartGenie (SGX Market Only)

This effective technical analysis tool employ 18 effective and commonly used technical signals to detect and alert you on actionable trading ideas that help to identify trends for your next trading decision

Time	Stock	Strength
4:17pm	Zhongmin Baihui 5SR	Bearish MACD Crossover ■■
4:10pm	KTL Global EB7	Support - Broken with High ■■■■■■■■■■
4:06pm	OCBC Bank O39	Support - Broken with High ■■■■■
3:50pm	Luxking BKK	Support - Broken with High ■■
3:47pm	Sitra 5LE	Bearish MACD Crossover ■■■■■■■■■■
3:35pm	Adventus 5EF	Bearish MACD Crossover ■■
3:28pm	SamuderaShipping 556	Bearish MACD Crossover ■■■■■
3:24pm	Xyec 5WR	Support - Broken with High ■■
3:18pm	Hiap Hoe 5JK	Support - Broken with High ■■
3:16pm	DBS D05	Support - Broken with High ■■■■■
3:13pm	Cache Log Trust K2LU	Support - Broken with High ■■■■■
3:12pm	SBS Transit S61	Bullish MACD Crossover ■■■■■■■■
3:06pm	Ascendas-iTrust CY6U	Resistance - Breakout with ■■■■■■■■
2:57pm	Wee Hur E3B	Bearish MACD Crossover ■■■■■
2:55pm	Excelpoint BDF	Bearish MACD Crossover ■■

# User Reference Guide to UTRADE Android Tablet App

## StockScreener (SGX Market Only)

Screen for opportunities using fundamental indicators such as market capitalisation and price/earnings ratio.

There are 4 screener available:

- i. Basic
- ii. High Div Yield
- iii. Value Stocks
- iv. Advanced

Stock Screener

Basic | High Div Yield | Value Stocks | Advanced

Criteria	Minimum		Maximum	Enabled
Market Cap (Mil)	<input type="text" value="0"/>	<div><div></div></div>	<input type="text" value="168283"/>	<input checked="" type="checkbox"/>
P/E Ratio	<input type="text" value="0"/>	<div><div></div></div>	<input type="text" value="1160"/>	<input checked="" type="checkbox"/>
EPS	<input type="text" value="-1824"/>	<div><div></div></div>	<input type="text" value="33"/>	<input checked="" type="checkbox"/>
ROI	<input type="text" value="-1586"/>	<div><div></div></div>	<input type="text" value="587"/>	<input checked="" type="checkbox"/>
ROE	<input type="text" value="-1725"/>	<div><div></div></div>	<input type="text" value="568"/>	<input checked="" type="checkbox"/>
Dividend Yield (%)	<input type="text" value="0"/>	<div><div></div></div>	<input type="text" value="219"/>	<input checked="" type="checkbox"/>
Average Vol (Mil)	<input type="text" value="0"/>	<div><div></div></div>	<input type="text" value="225"/>	<input checked="" type="checkbox"/>
Mean Rating	<input type="text" value="0"/>	<div><div></div></div>	<input type="text" value="5"/>	<input checked="" type="checkbox"/>

Glossary

Search

Reset

Adjust the parameter accordingly and click on search button. The results will be populated below the screener.

Stock Screener

Basic | High Div Yield | Value Stocks | Advanced

Mean Rating  ☒

Glossary

Search

Reset

Company	Code	MktCap	P/E Ratio	EPS	ROI	ROE	Yield	AvgVol	Rating
BBR	KJS	49.01	30.64	0.0052	1.291	1.204	5.031	0.0145	--
BDO	BDO	91.83	882.35	0.0003	0.5579	0.0994	3.333	0.007	1
BRC Asia	BEC	118.42	7.806	0.0807	8.124	9.239	7.143	0.014	--
Baker Technology	568	177.52	11.16	0.0157	7.125	7.125	5.714	0.1199	--
Best World	SER	70.96	8.346	0.0383	13.95	14.8	3.125	0.1067	--
Boardroom	B10	116.2	13.42	0.0447	10.27	12.51	5	0.0014	--
Bonvests	B28	480.59	7.724	0.1547	6.638	7.455	1.339	0.0078	--
Boustead	F9D	405.32	8.411	0.0892	11.31	14.18	4	0.0868	2
BreadTalk	5DA	295.99	28.82	0.0364	6.613	10.12	1.429	0.1174	3
Bukit Sembawang	B61	1084.84	10.85	0.3864	7.983	7.994	0.9546	0.0107	--

Page 6/62

FirstPrevious45678NextLast

# User Reference Guide to UTRADE Android Tablet App

## Alert Page (SGX Market Only)

Follow the steps in the page to setup the alert.  
Click on 'Save' and the alerts can be found in the alert list

Set Stock Alert | Alert List

Step 1  
Select an Exchange

SGX

Step 2  
Search by Stock code/name

Step 3  
Select Alert Criteria

Price greater than or equal to

Step 4  
Select Alert Value

Save

Set Stock Alert | Alert List

No	Delete	Update	Mkt	Stock Name	Alert Type	Alert Value	Triggered
1	<input type="radio"/>	<input type="radio"/>	SGX	SingTel	Price greater than or equal to	3.9	N

Save

1. A minimum of 30 alerts can be created

2. If the client is subscribed to or has redeemed SMS stock Alerts, a maximum of 5 SMS alerts will be sent a day

3. Alert not triggered within 2 weeks from the date created will be deleted

4. Alerts triggered will not be re-sent. Please update the alerts to reactivate them

5. The receipt and timeliness of alerts are dependent on the service providers and the data/services subscribed

# User Reference Guide to UTRADE Android Tablet App

## Manage Watchlist (SGX Market Only)

Manage your watchlist on this page. There are 5 watchlist, each with a maximum of 30 counters.

Watchlist 1

Enter Stock Code/Name

Add

Clear

Stock Name	Order	
FT ST FINANCIAL	Trade	Delete
STRAITS TIME IDX	Trade	Delete
Noble	Trade	Delete
Sakae	Trade	Delete
Singapore O&G	Trade	Delete
UOA	Trade	Delete
UOB	Trade	Delete

To add a counter, enter the stock name/code in the field and click on the “Add”.

Enter Stock Code/Name

Add

To remove a counter, click on the “Delete” button.

## Contact Us

UOB Kay Hian contacts can be found on this page

Client Services Hotline: [+65 6536 9338](tel:+6565369338)

Email: [contact@utrade.com.sg](mailto:contact@utrade.com.sg)

Web Form: [Click here](#)

### Operating Hours

Head Office	
Client Services	
Mon to Fri	8:30am - 6:00pm
Closed on Sat, Sun and SG Public Holidays	
Client Services - US Nightdesk	
Mon to Fri	10:00pm - 2:00am (1st Sun of November to 2nd Sun of March)
	9:00pm - 1:00am (2nd Sun of March to 1st Sun of November)
Closed on Sat, Sun and US Public Holidays	
 <b>Investor Centres</b> <a href="#">Learn more</a>	
Mon to Fri	9:00am - 6:00pm
Closed on Sat, Sun and SG Public Holidays	

### Addresses

#### Head Office Map

8 Anthony Road, #01-01, Singapore 229957  
(Next to Newton MRT Station Exit B)

#### Investor Centres

Raffles Place [Map](#)  
39 Circular Road, Singapore 049395

Jurong East [Map](#)  
Block 134, Jurong Gateway Road #01-311, Singapore 600134

#### Bedok Map

Block 214, Bedok North Street 1, #01-187, Singapore 460214



# User Reference Guide to UTRADE Android Tablet App

## RWS T&C

Markets Agreements are listed on this page

Market Agreements

Market	Accepted Date
SGX	27-OCT-2015
BURSA	27-OCT-2015
HKEx	15-JAN-2016

Risk Warning Statement For Overseas-Listed Investment Products

Acknowledgement of RWS Status : YES.

## Setting

Enable/disable Hardware Acceleration setting on this page to improve the performance of the charts.

Settings

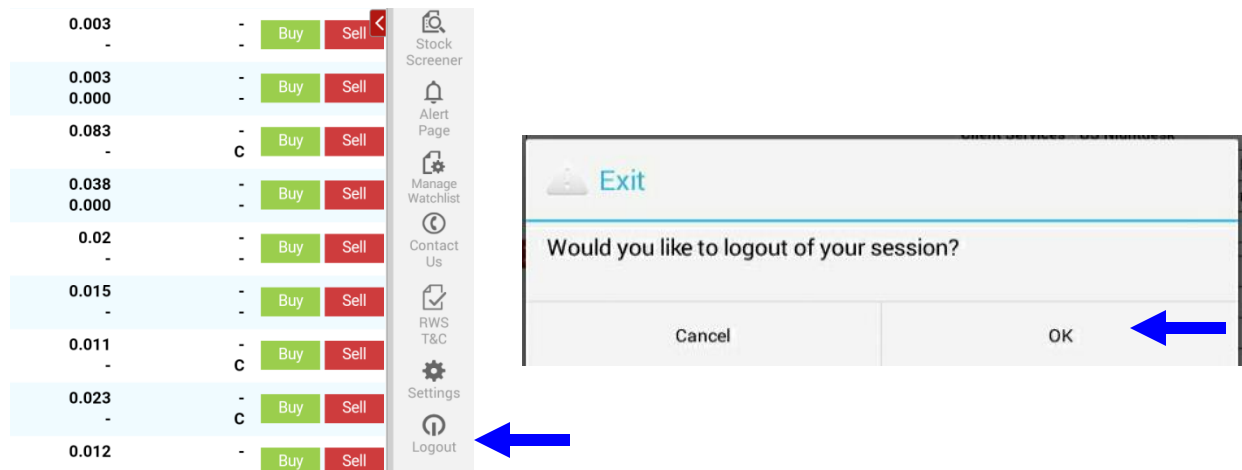
Hardware Acceleration

ON

# User Reference Guide to UTRADE Android Tablet App

## Logout

Log out by clicking this



## Assistance and Feedback

If you require any assistance or wish to offer your feedback, please feel free to contact our friendly Client Services Officers at +65 6536 9338 or [cs@uobkayhian.com](mailto:cs@uobkayhian.com).

**Disclaimer**  
Whilst care and effort has been taken to ensure the accuracy of the information provided herein and in UTRADE Mobile, UOB Kay Hian Pte Ltd does not warrant the information expressed or implied is absolutely true, correct, timely or fit for any particular purpose or use. We are not liable for any loss or damage arising from the use of this information. Use of UTRADE Mobile may involve the electronic transmission of personal financial information. Using this platform is consent to such transmission of this information; such consent is effective at all times when using this platform. Use of this platform also constitutes agreement of the Terms and Conditions Governing Internet Trading